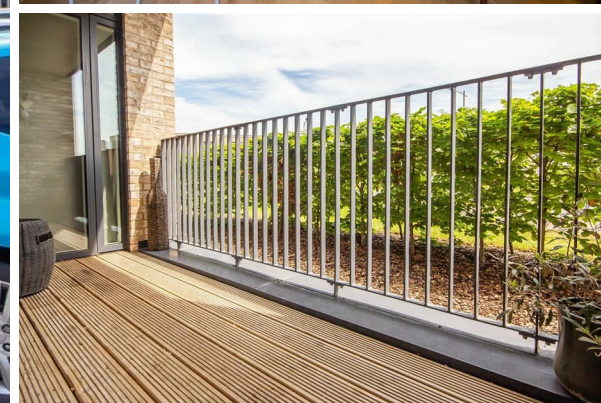
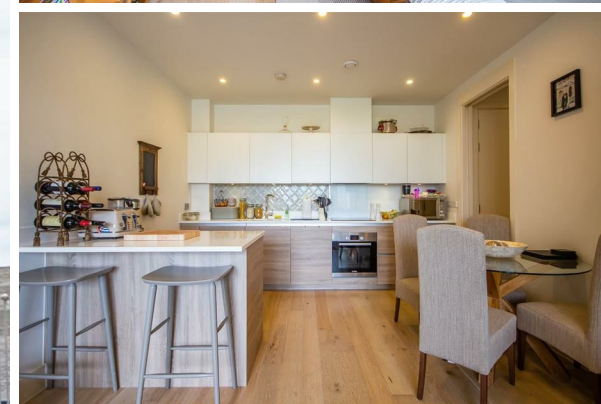




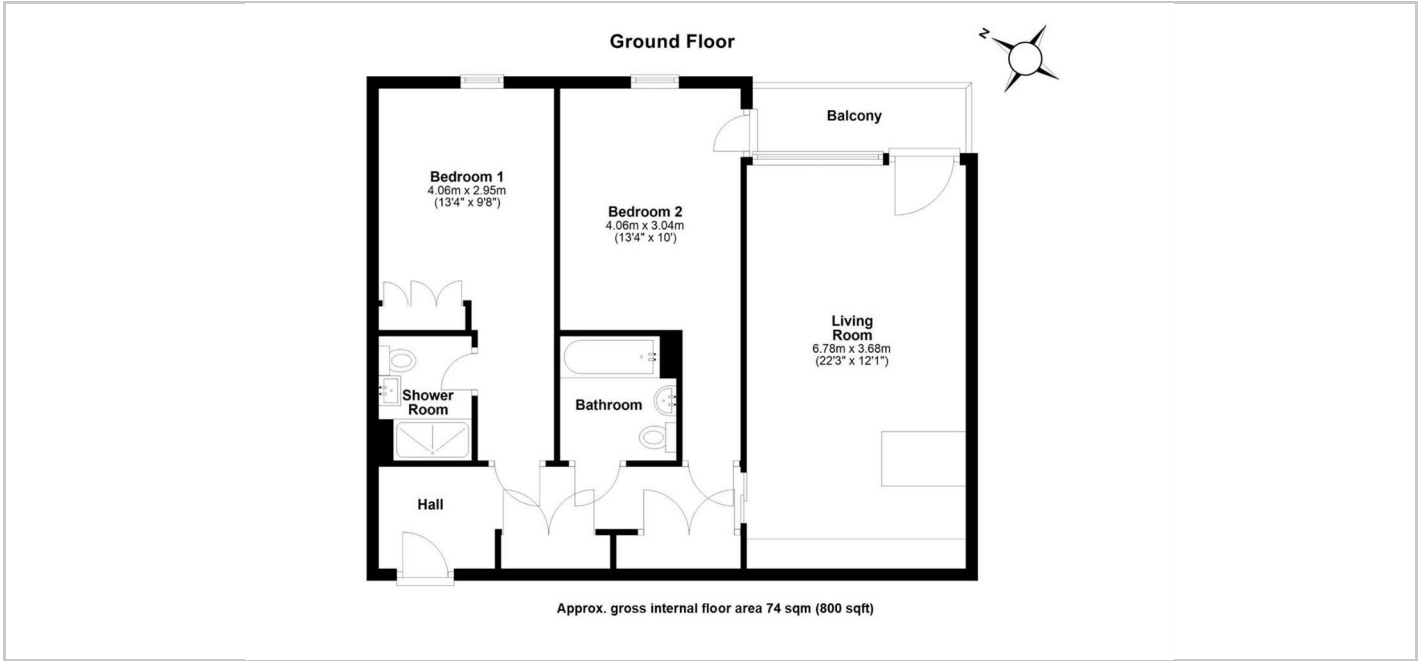
Redmayne Arnold & Harris
estate agents, letting agents & surveyors

rah.co.uk



14 Gresham House, Partridge Close, Trumpington, Cambridge, CB2 9AR

£1,600 PCM



Directions

THE PROPERTY

A modern designed, unfurnished ground-floor 2-bedroom apartment in a unique residential development in this popular location in Trumpington. This location is within a short walk of the Hospital/Biomedical campus, local amenities including GP, dentist, library, post office and a large supermarket. There are picturesque walks to local pubs, restaurants and parks in Trumpington, Grantchester and the Shelfords. The property will be managed by RAH.

- Council Tax Band: C
- EPC Rating: C
- Minimum 12 Month Tenancy
- Deposit: £1840
- Holding Deposit: £360

SITUATION

